



Society for the Advancement  
of Modeling and Role-Modeling

[www.mrmnursingtheory.org](http://www.mrmnursingtheory.org)

18<sup>th</sup> Biennial International Conference

# Bridging Worldviews: Inclusion, Partnership, and Collective Wisdom

October 18-20, 2023 | Virtual Conference Schedule

[Register Here](#)

# Wednesday | October 18

Speaker and Presentations Moderator: Ellen Schultz, PhD, RN, HTCP, AHN-BC, SGAHN

WEDNESDAY SCHEDULE  
2pm-8pm EDT

2:00pm - 2:10pm EDT | **Welcome and Disclaimer**

---

2:10pm - 3:10pm EDT [Contact Hours 1.0](#)

**Opening Session Invited Speaker**  
**Holism and Quantum Theory**

Debra Rose Wilson PhD, MSN, RN, IBCLC, AHN-BC, CHT

---

3:10pm - 4:10pm EDT [Contact Hours 1.0](#)

**Keynote**

**Bridging Worldviews: What does it take?**

Helen Erickson, PhD, RN, AHN-BC, FAAN, SGAHN

---

4:10pm - 4:40pm EDT [Contact Hours 0.5](#)

**Modeling the World of Six Shoeshine Boys in 1998-1999 in Vietnam and Finding Them Again 20 Years Later**

Riki Scheela, PhD, MS, MA, BA

---

4:40pm - 5:00pm EDT | **Time to Pause and Be**

---

5:00pm - 5:30pm EDT [Contact Hours 0.5](#)

**Battle of COVID-19: Overcoming Feelings of Abandonment With Strategies To Promote Wellness**

Karen Robinson, PhD, RN, FAAN  
and Michele Gierach, EdD, RN, CNE

---

5:30pm - 6:00pm EDT [Contact Hours 0.5](#)

**Panel: Helen Erickson, Moderator**

**Thoughts about: Lived Experiences of Frontline Nurses, COVID-19 Pandemic**

Amanda Peterson, MSN, AGACNP-BC, CCRN  
Eric Schaub, BSN, RN, HNB-BC and  
Helen Erickson, PhD, RN, AHN-BC, FAAN, SGAHN

---

6:00pm - 6:30pm EDT [Contact Hours 0.5](#)

**Collective Wisdom for Holistic Health and Immune Support: Connections Between MRM Theory and Terrain Theory**

Karen Gutierrez, RN, PhD, MSN-Ed, AHN-BC

---

6:30pm - 6:45pm EDT | **Time to Pause and Be**

---

6:45pm - 7:15pm EDT [Contact Hours 0.5](#)

**Seeking Help, Experiencing Vulnerability and Finding a Path of Unknown Wonders: A Modeling and Role-Modeling Nursing Theory Exemplar**

Carolyn Kinney, PhD, RN, SGAHN

---

7:15pm - 7:45pm EDT [Contact Hours 0.5](#)

**Improving Diversity, Equity, and Inclusion for the Native Hawai'ian and Pacific Islander Populations by Increasing the Cultural Competence Levels of Nurse Providers**

Celeste Baldwin, PhD, MS, APRN, CNS

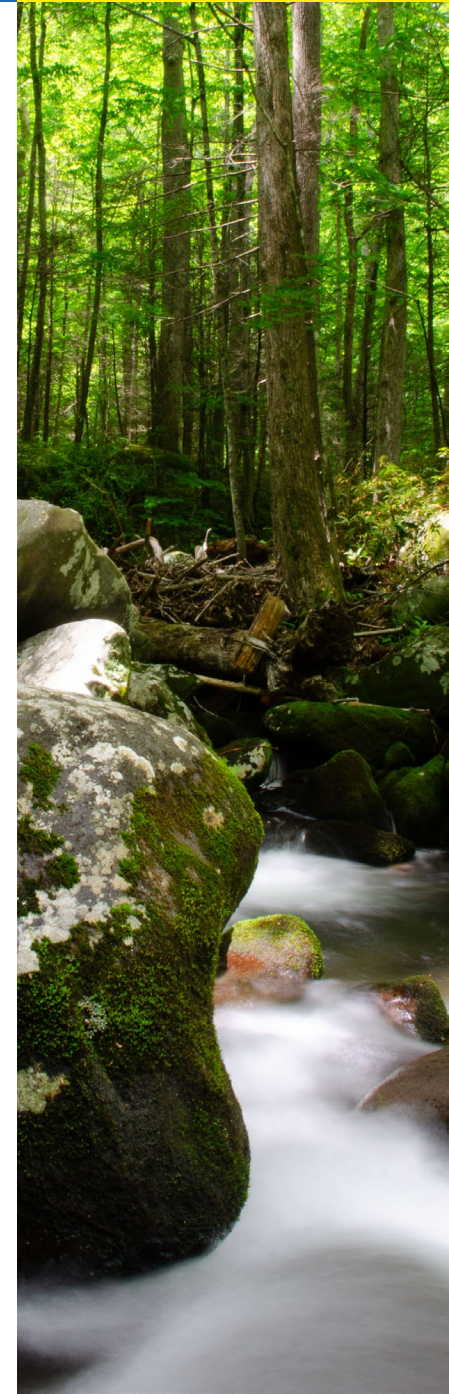
---

7:45pm - 8:00pm EDT [Contact Hours 0.25](#)

**Q&A and Dialogue**

**Bringing It All Together**

---



# Thursday | October 19

Speaker and Presentations Moderator: Gloria Duke, PhD, RN

THURSDAY SCHEDULE  
10am-5pm EDT

10:00am - 10:50am EDT

## SAMRM Business Meeting

### All conference participants are welcome

Separate virtual meeting and will not be recorded.

10:50am - 11:00am EDT | **Time to Pause and Be**

11:00am - 11:45am EDT **Contact Hours 0.75**

## Invited Speaker

### A Reflective Journey: From Navy Hospital Corpsman in Vietnam to Holistic Nurse

David Shields, MSN, RN, AHN-BC, QTTT

11:45am - 12:15pm EDT **Contact Hours 0.5**

### Integration Of Social Determinants of Health and Patient Identified Resources in a Nurse Practitioner Managed Free Clinic

Janet Bischof, PhD, RN, NE-BC, CNE  
Mary Meyers, C.S.J., DNP, RN, AGNP-C  
and Denise Lucas, PhD, FNP-BC, CRNP, FAANP

12:15pm - 1:15pm EDT **Contact Hours 1.0**

## Special Fireside Chat Event

### Diverse Populations: An Analysis of Affiliated-Individuation (A-I) Status and Ability to Cope

Helen Erickson PhD, RN, AHN-BC, FAAN, SGAHN  
and Carolyn Kinney, PhD, RN, SGAHN

1:15pm - 1:45pm EDT | **Time to Pause and Be**

1:45pm - 2:15pm EDT **Contact Hours 0.5**

### Incorporating a Cultural Aspect with the Seven Grandfather Teachings and Animal Guides

Eileen Miller, RN, CDCES  
and Rachele Donnell, RN, NRMET

2:15pm - 3:15pm EDT **Contact Hours 1.0**

## Panel: Da'Lynn Clayton, Moderator

### Practice Ready: Integrating Holistic and Relationship-Centered Care into Simulation

Nona Lacy, MSN, RN, Johnnetta Kelly PhD, RN  
and Da'Lynn Clayton PhD, RN, SGAHN

3:15pm - 3:30pm EDT | **Time to Pause and Be**

3:30pm - 4:00pm EDT **Contact Hours 0.5**

### Bridging Worldviews through Nursing Education: The Influence of the Five Aims in Caring for People in the Margins

Joyce Miller, DNP, RN and Kathleen Clark, DNP, RN

4:00pm - 4:30pm EDT **Contact Hours 0.5**

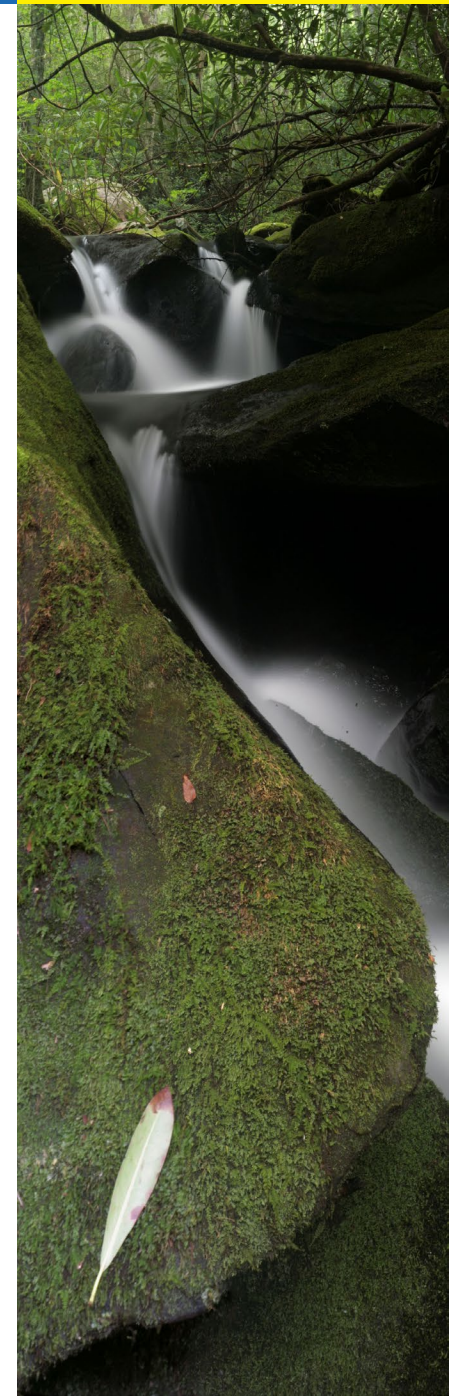
### Narrative Pedagogy: Framing the Story with Modeling and Role-Modeling Theory

Nancyruth Leibold, EdD, RN, MSN, PHN, CNE, AHN-BC  
and Mary Bemker, PhD, PsyS, MSN, LADC, LPCC-S, CN, RN

4:30pm - 5:00pm EDT **Contact Hours 0.5**

## Q&A and Dialogue

### Bringing It All Together



# Friday | October 20

Speaker and Presentations Moderator: Carolyn Kinney, PhD, RN, SGAHN

FRIDAY SCHEDULE  
11am-5pm EDT

11:00am - 11:30am EDT [Contact Hours 0.5](#)

## Embracing Indigenous Wisdom: Experiencing the World Through an Indigenous Lens

Misty Wilkie, PhD, RN, FAAN

11:30am - 12:00pm EDT [Contact Hours 0.5](#)

## Prescription for Academic Success Using Modeling and Role-Modeling: An Individualized Approach

Gina Hale, PhD, RN, CNE,  
Bethany Steely, MSN, RN, CCRN-K  
and Jenny Thedford, MSN, RN, CCRN-K

12:00pm - 12:30pm EDT [Contact Hours 0.5](#)

## Connecting with Our Values, Attitudes, and Inner Knowing

Margaret Erickson, PhD, RN, CNS, APRN, APHN-BC, SGAHN  
and Deb Shields, PhD, RN, AHN-BC, QTTT, SGAHN

12:30pm - 12:45pm EDT | [Time to Pause and Be](#)

12:45pm - 1:45pm EDT [Contact Hours 1.0](#)

**Panel: Helen Erickson, Moderator**

## What is involved with Jumping the Gap between Education and Practice?

Ellen Schultz, PhD, RN, HTCP, AHN-BC, SGAHN  
Brenda Moffitt, MSN, ARNP, CNS-BC, CLC  
Charles Reed, PhD, RN, CNRN, SGAHN  
and Helen Erickson, PhD, RN, AHN-BC, FAAN, SGAHN

1:45pm - 2:15pm EDT [Contact Hours 0.5](#)

## Conceptual Intertwining of Modeling & Role-Modeling Nursing Theory and Holistic Nurse Coaching

Gloria Duke, PhD, RN

2:15pm - 2:30pm EDT | [Time to Pause and Be](#)

2:30pm - 3:00pm EDT [Contact Hours 0.5](#)

## An Innovation in Teaching Nursing Theory

Ellen Schultz, PhD, RN, HTCP, AHN-BC, SGAHN

3:00pm - 4:45pm EDT [Contact Hours 1.75](#)

## Grand Rounds with Helen Erickson Grand Rounds

Helen Erickson, PhD, RN, AHN-BC, FAAN, SGAHN  
Celeste Baldwin, PhD, MS, APRN, CNS  
and Jennifer Ramos, MSN, RN, CMSRN

4:45pm - 5:00pm EDT [Contact Hours 0.25](#)

## Wrapping Up

## Vision For the Future and Closing Conference Statements

Helen Erickson PhD, RN, AHN-BC, FAAN, SGAHN

### Contact Hours Statement

This activity has been submitted to the American Holistic Nurses Association for approval to award contact hours. The American Holistic Nurses Association is accredited as an approver of nursing continuing professional development by the American Nurses Credentialing Center's Commission on Accreditation

\*Waterfall imagery offered in-kind by Greg Clayton.

